

ENDE[®]
speakers

The DA VINCI



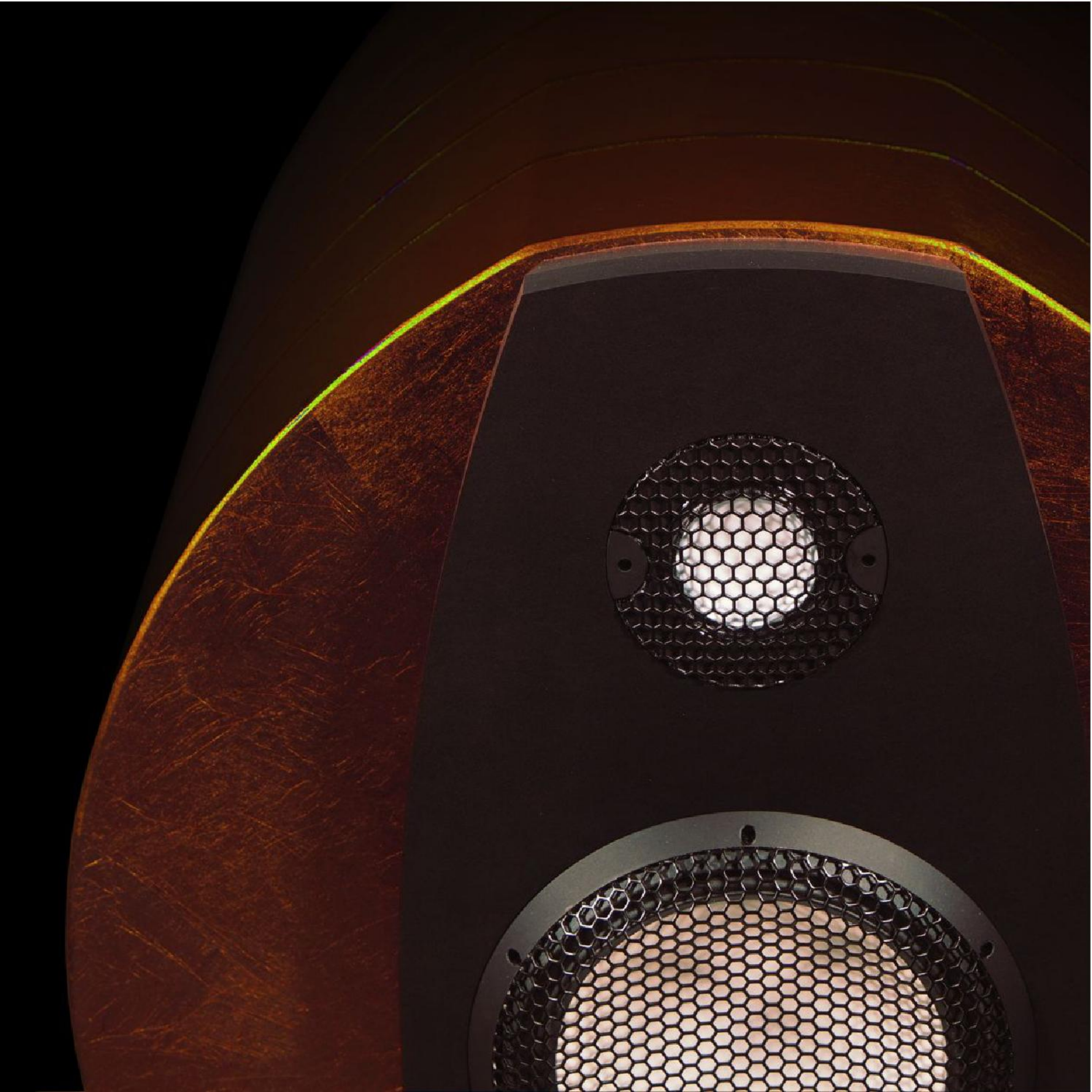
Ver. 01-13



A close-up photograph of a speaker's outer rim, which is made of a dark, textured material. A single screw is visible on the black baffle. The rim is made of a lighter, possibly copper or aluminum, material with a brushed finish. The background is dark and out of focus.

"I am strong"

High power handling.
Long excursion 10" aluminum
Woofer for the deepest bass ever
in its size class.





"I am sophisticated"

1,2" Tweeter and 5" Midwoofer
ceramic drivers for an exciting
and magic sound.

“I am stylish”

Wood, Aluminum and Stainless steel. Elegant materials combined with its modern design make the DA VINCI a work of art to display proudly.





"I am luxurious"

The best finishes You've ever seen



Silver Opuence
(silver like leaf)



Golden Age
(gold like leaf)



Shocking Copper
(real copper leaf)



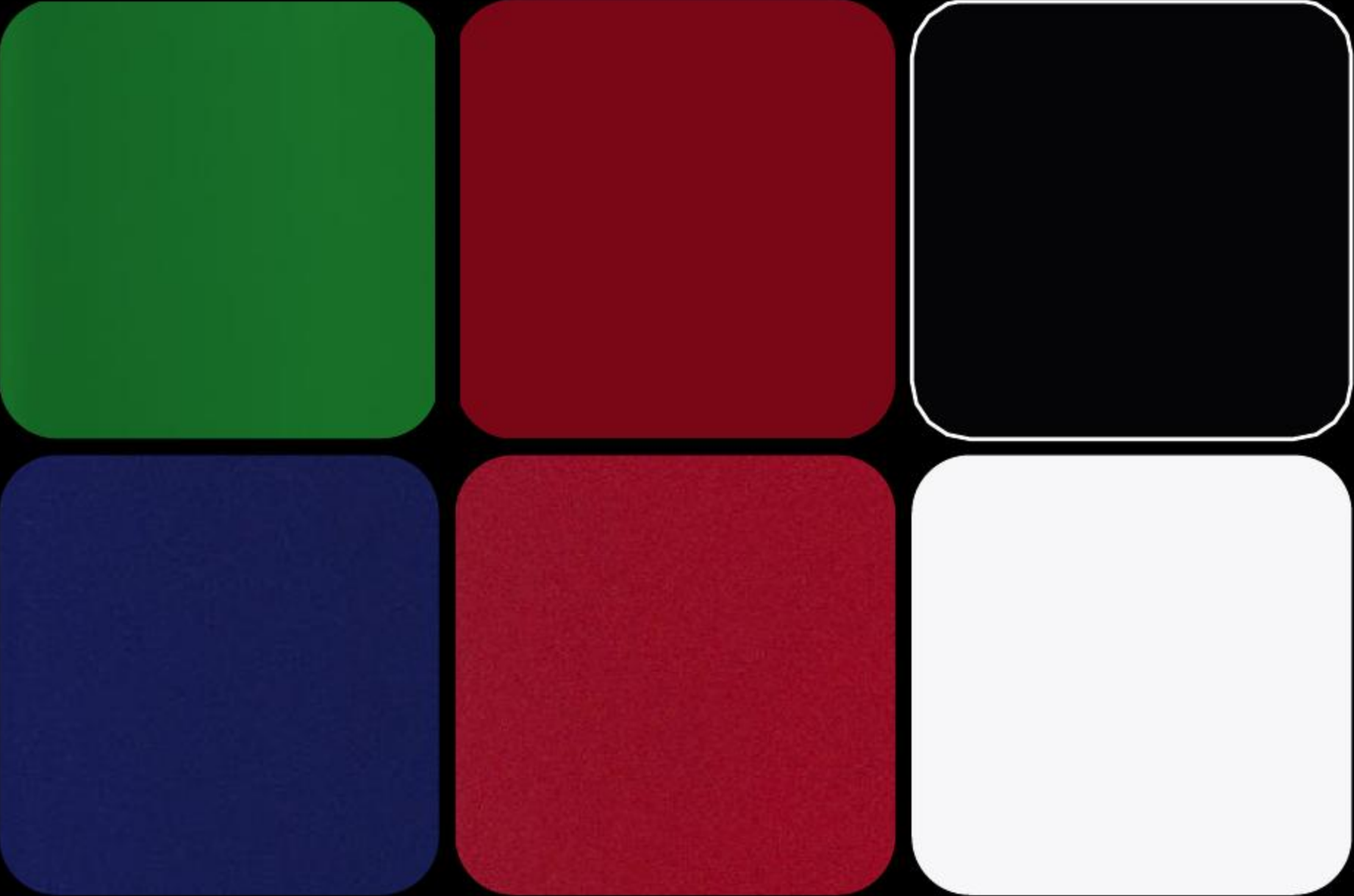
Imperial Bronze
(real bronze leaf)

Technical specs.

Layout	3 ways with 3 drive units in sealed box
Treble unit (tweeter)	1,2" - 30 mm Accuton CELL drive
Dome material	Ceramic
Mid-bass unit	5" - 124 mm Accuton CELL drive
Cone material	Ceramic
Bass unit (woofer)	10" - 290 mm SB Acoustic drive
Cone material	Aluminum
Power handling	200 Watt
Nominal impedance	6 Ω
Sensitivity	84 dB
Frequency response (\pm 3dB)	30 Hz - 40kHz
Dimensions	
Height x Width x Depth (mm x mm x mm) including feet and spikes	420 mm x 307,5 mm x 300 mm
Net weight (per piece)	18,6 kg

Finishes and MSRP for EU

Fashion Finishes (Lacquer and Metallic)



EU SUGGESTED RETAIL PRICE
PER PIECE

€ 5.600,00

Luxury Finishes (Silver, Gold, Copper Leaves)



€ 5.900,00

Luxury Finishes (Bronze Leaf)



€ 6.100,00

fashion&passion

EMMESPEAKERS snc

C.so Lodi 106

20139 Milano - Italy

Vat ID IT07920070963